

# Tahoe Direct-Vent Clean-Face Fireplace

## DVCP32BP



### INCLUDES

- Fireplace Barrier Screen

### REQUIRES

- 6-piece Ceramic Fiber log set

### ACTUAL DIMENSIONS

34 7/16" W x 38 1/4" H x 17 1/2" D

### GLASS VIEWING AREA

27" W x 25" H

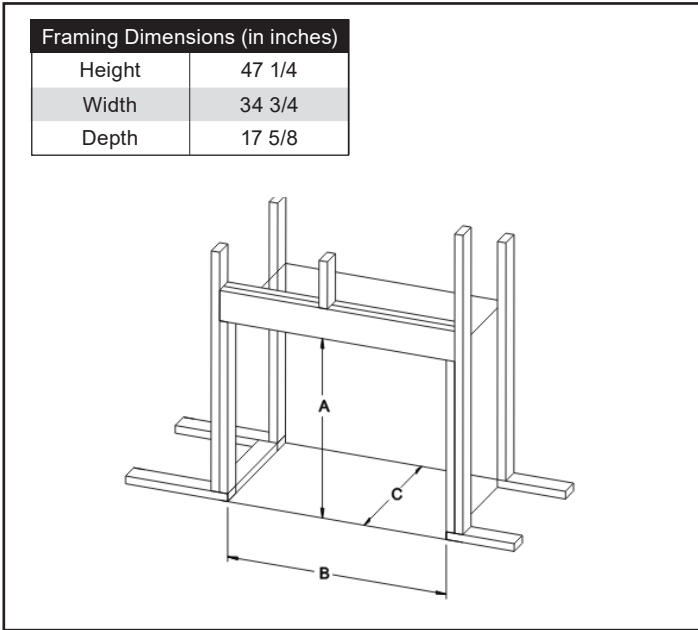
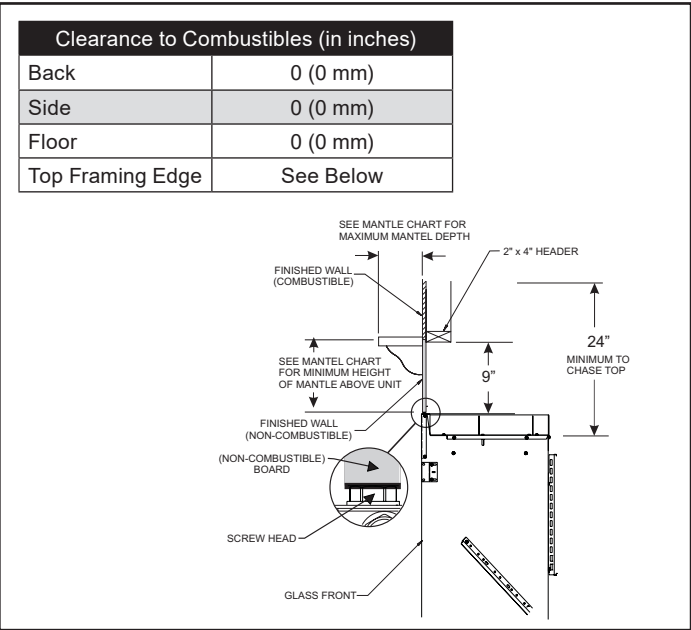
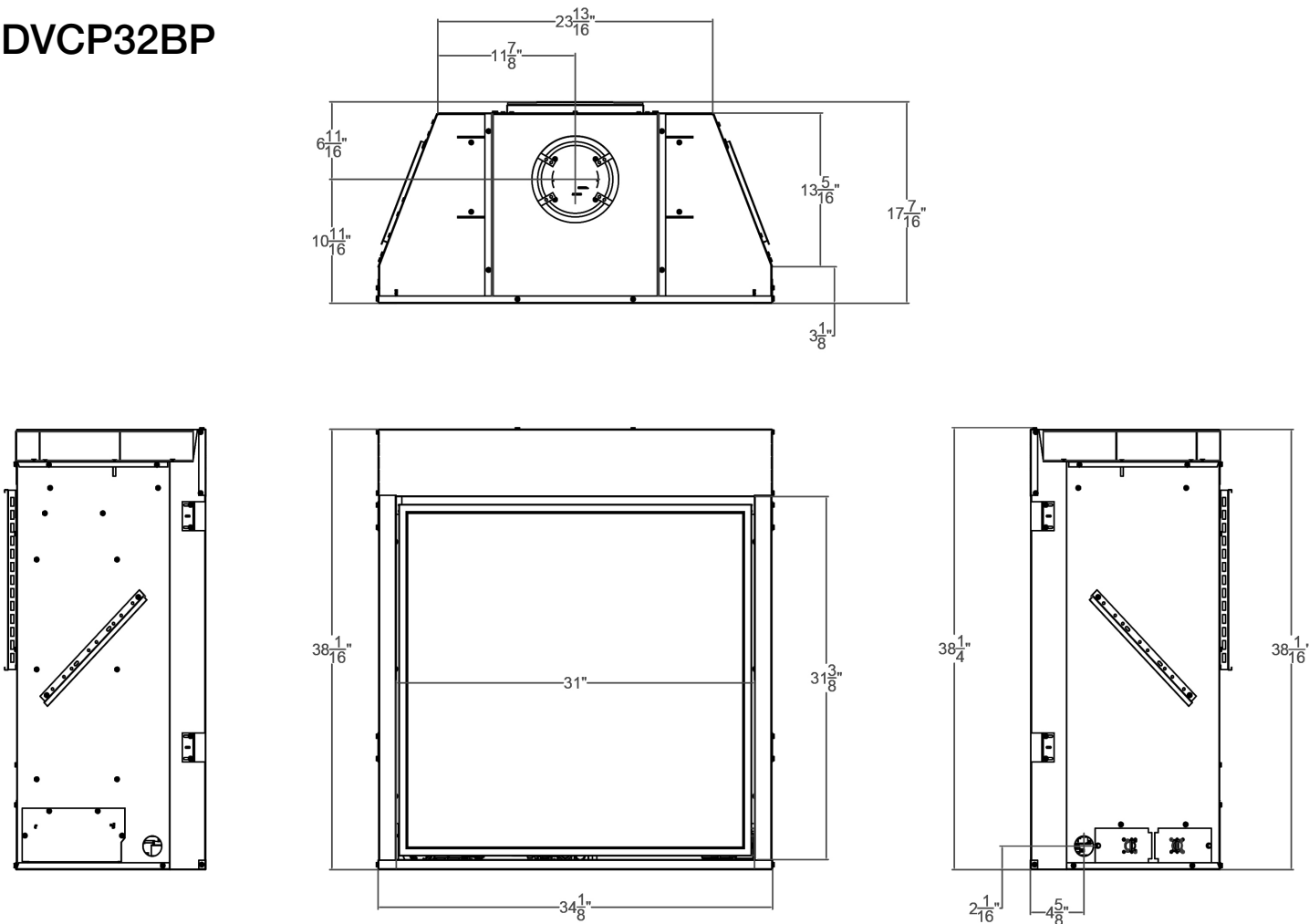
### TECHNICAL INFORMATION

- Maximum heat output:
  - 22,000 BTU (LP),
  - 24,000 BTU (Nat)
- Efficiency Rating:
  - 45.23% A.F.U.E.
  - 47.50% P4
- Weight: 121 lbs.
- Clearances
  - Side Wall: 0"
  - Top Trim: 0"
- Type of Gas: LP or Natural
- Iron Pipe Size: 1/2-inch
- Ignition Systems: Intermittent Pilot or Millivolt
- Vent Size: 4 x 6 5/8 inch  
Top Vent Only

### FIELD INSTALLED ACCESSORIES

- Liners:
  - Aged Brick
  - Black Porcelain
  - Rustic Brick

# DVCP32BP



Empire is committed to continuous product improvement; specifications are subject to change without notice. Dimensions in this brochure are approximate; read and follow the framing dimensions in the owners manual supplied with your Empire product. Flame size, shape, and color will vary from photos. Our mantels feature natural veneers and hand-rubbed finishes – wood grain and color will vary. Adjust light levels and use “natural light” incandescent bulbs to enhance the dramatic look for your wooden mantel.

Member of the following industry associations:



This appliance is design-certified to the ANSI standard by:



SINCE 1932

Empire Comfort Systems Inc.  
918 Freeburg Ave.  
Belleville, IL 62220-2623  
info@empirecomfort.com  
01/18



# Tahoe Direct-Vent Clean-Face Fireplace

## DVCP36BP



### INCLUDES

- Fireplace Barrier Screen

### REQUIRES

- 6-piece Ceramic Fiber log set

### ACTUAL DIMENSIONS

34 7/16" W x 38 1/4" H x 17 1/2" D

### GLASS VIEWING AREA

31" W x 25" H

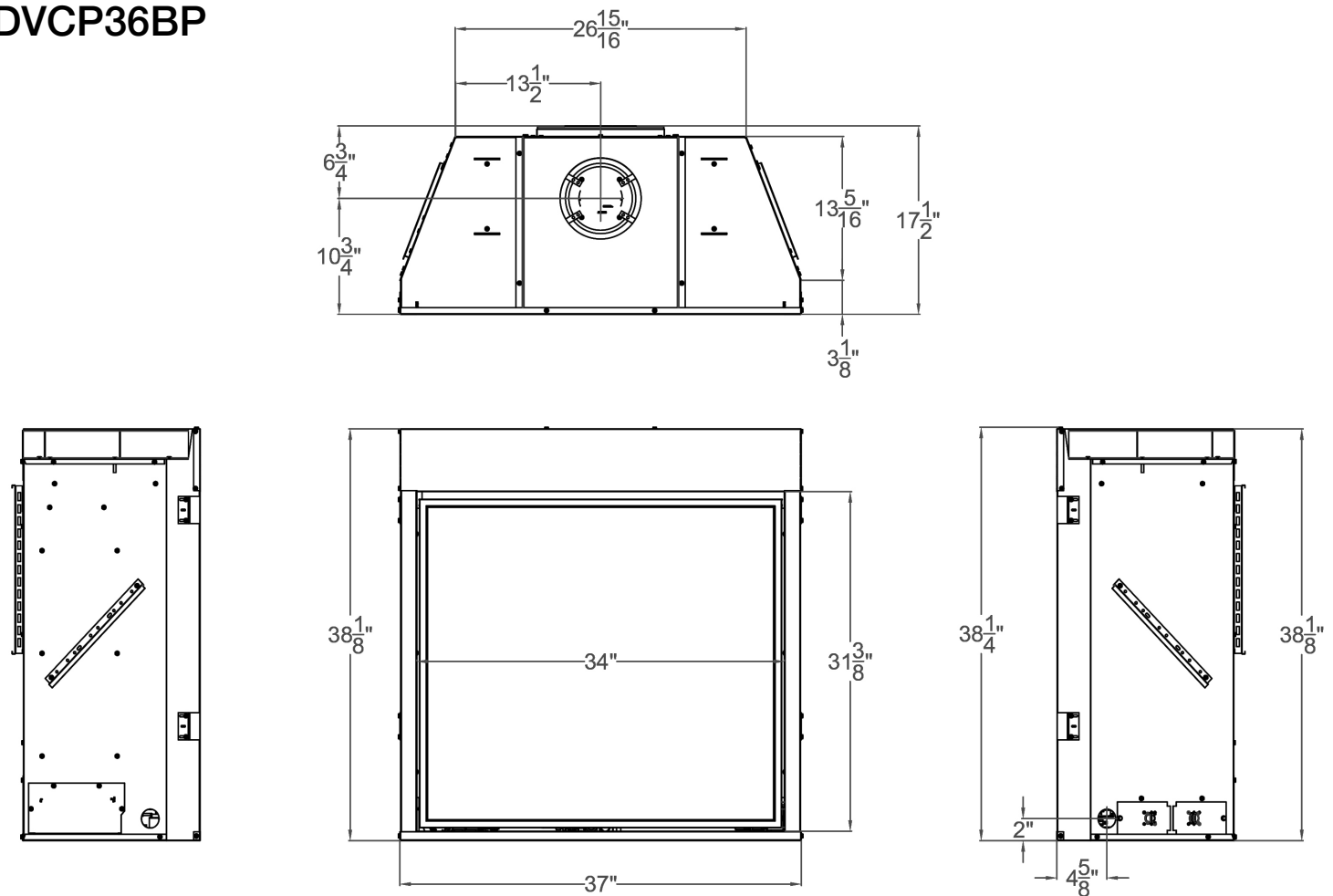
### TECHNICAL INFORMATION

- Maximum heat output: 24,000 BTU
- Efficiency Rating:
  - 48.03% A.F.U.E.
  - 51.10% P4
- Weight: 132 lbs.
- Clearances
  - Side Wall: 0"
  - Top Trim: 0"
- Type of Gas: LP or Natural
- Iron Pipe Size: 1/2-inch
- Ignition Systems: Intermittent Pilot or Millivolt
- Vent Size: 4 x 6 5/8 inch
- Top Vent Only

### FIELD INSTALLED ACCESSORIES

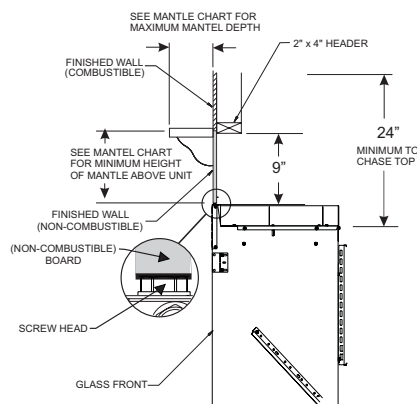
- Liners:
  - Aged Brick
  - Black Porcelain
  - Rustic Brick

# DVCP36BP



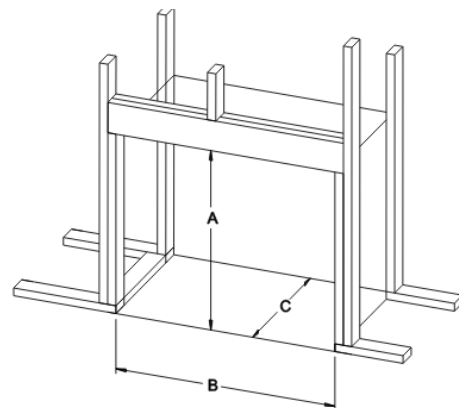
## Clearance to Combustibles (in inches)

Back	0 (0 mm)
Side	0 (0 mm)
Floor	0 (0 mm)
Top Framing Edge	See Below



## Framing Dimensions (in inches)

Height	47 1/4
Width	37 3/4
Depth	17 5/8



Empire is committed to continuous product improvement; specifications are subject to change without notice. Dimensions in this brochure are approximate; read and follow the framing dimensions in the owners manual supplied with your Empire product. Flame size, shape, and color will vary from photos. Our mantels feature natural veneers and hand-rubbed finishes – wood grain and color will vary. Adjust light levels and use "natural light" incandescent bulbs to enhance the dramatic look for your wooden mantel.

Member of the following industry associations:



The Empire Comfort Systems and White Mountain Hearth names and logos are registered U.S. trademarks.



SINCE 1932

Empire Comfort Systems Inc.  
918 Freeburg Ave.  
Belleville, IL 62220-2623  
info@empirecomfort.com  
01/18



# Tahoe Direct-Vent Clean-Face Fireplace

## DVCP42BP



### INCLUDES

- Fireplace Barrier Screen

### REQUIRES

- 6-piece Ceramic Fiber log set

### ACTUAL DIMENSIONS

34 7/16" W x 38 1/4" H x 17 1/2" D

### GLASS VIEWING AREA

37" W x 27" H

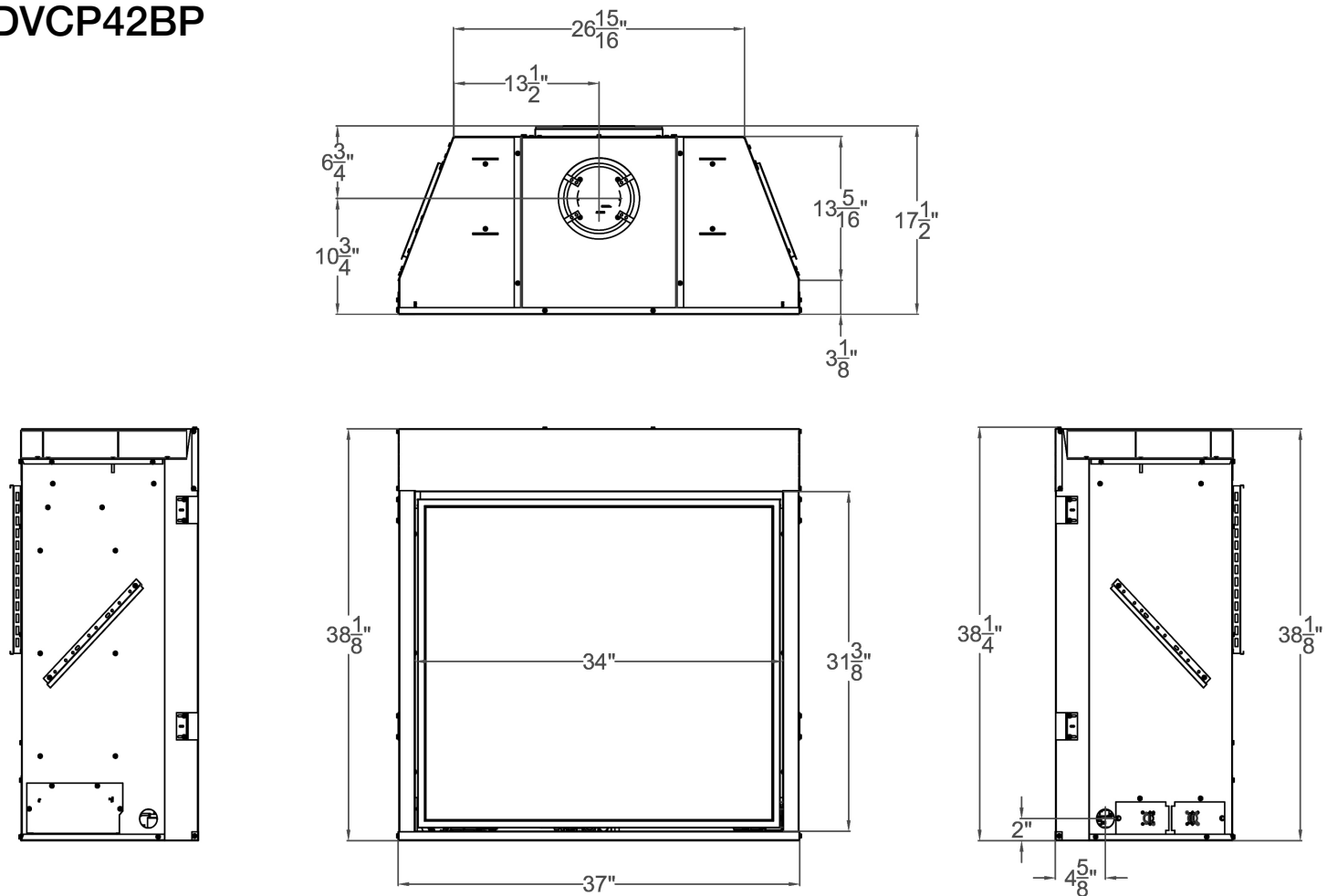
### TECHNICAL INFORMATION

- Maximum heat output:
  - 28,500 BTU
- Efficiency Rating:
  - 45.23% A.F.U.E.
  - 47.50% P4
- Weight: 121 lbs.
- Clearances
  - Side Wall: 0"
  - Top Trim: 0"
- Type of Gas: LP or Natural
- Iron Pipe Size: 1/2-inch
- Ignition Systems: Intermittent Pilot or Millivolt
- Vent Size: 4 x 6 5/8 inch
- Top Vent Only

### FIELD INSTALLED ACCESSORIES

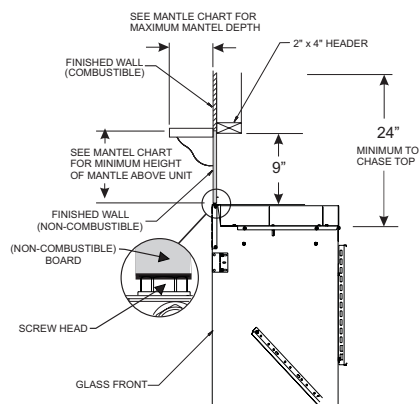
- Liners:
  - Aged Brick
  - Black Porcelain
  - Rustic Brick

# DVCP42BP



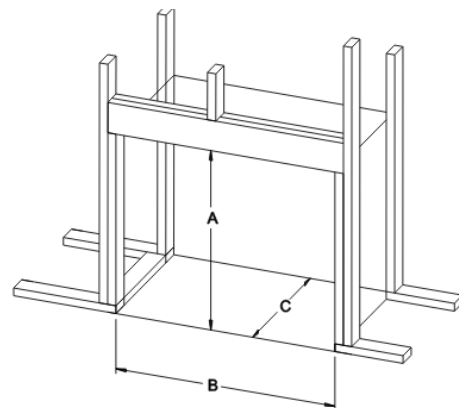
## Clearance to Combustibles (in inches)

Back	0 (0 mm)
Side	0 (0 mm)
Floor	0 (0 mm)
Top Framing Edge	See Below



## Framing Dimensions (in inches)

Height	47 1/4
Width	37 3/4
Depth	17 5/8



Empire is committed to continuous product improvement; specifications are subject to change without notice. Dimensions in this brochure are approximate; read and follow the framing dimensions in the owners manual supplied with your Empire product. Flame size, shape, and color will vary from photos. Our mantels feature natural veneers and hand-rubbed finishes – wood grain and color will vary. Adjust light levels and use "natural light" incandescent bulbs to enhance the dramatic look for your wooden mantel.

Member of the following industry associations:



This appliance is design-certified to the ANSI standard by:



SINCE 1932

Empire Comfort Systems Inc.  
918 Freeburg Ave.  
Belleville, IL 62220-2623  
info@empirecomfort.com  
01/18

The Empire Comfort Systems and White Mountain Hearth names and logos are registered U.S. trademarks.