

Innsbrook 20IN Direct-Vent Insert DVC20IN



INCLUDES

- Barrier Screen
- Blower

REQUIRES

- Surround

ACTUAL DIMENSIONS

40" W x 23 1/4" H x 15 7/8" D

GLASS VIEWING AREA

25 1/4 x 11 1/8

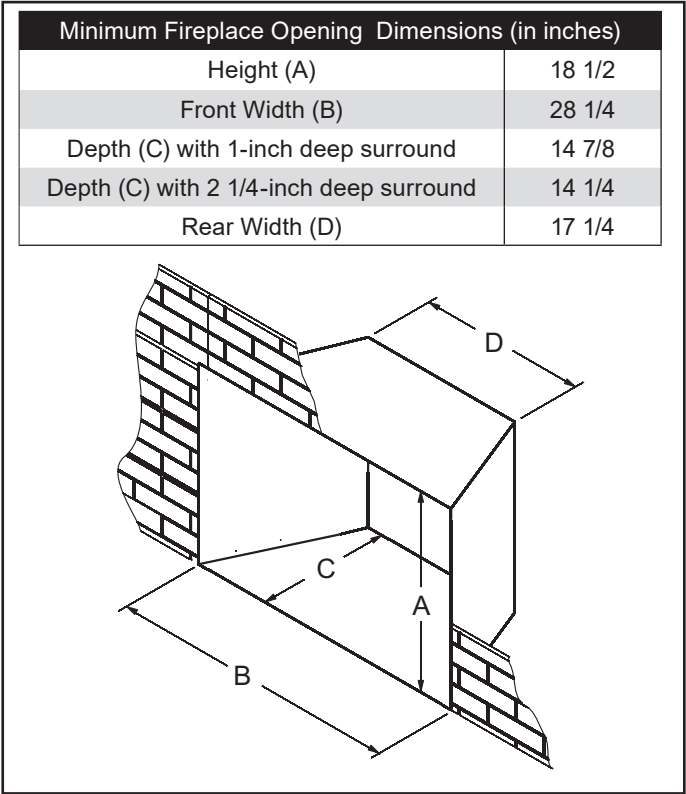
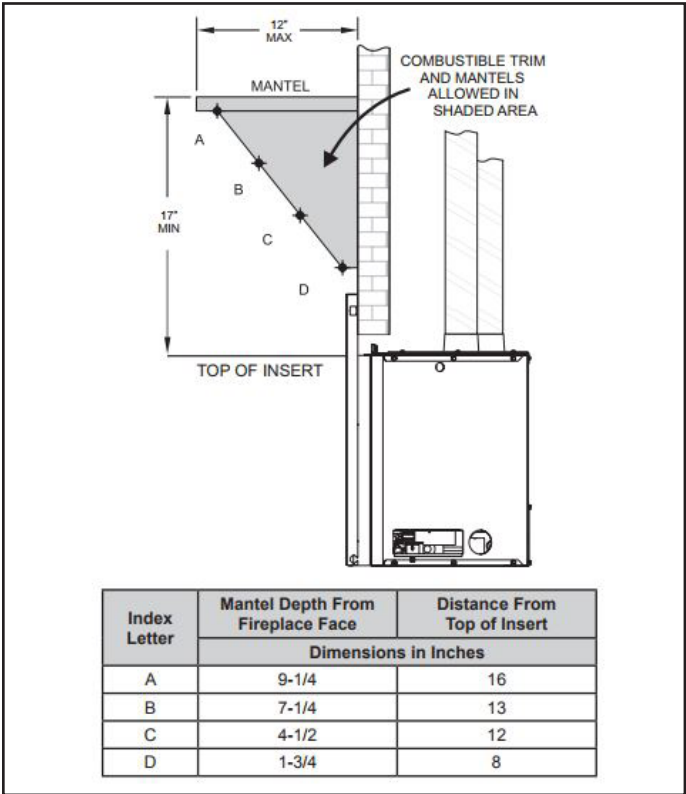
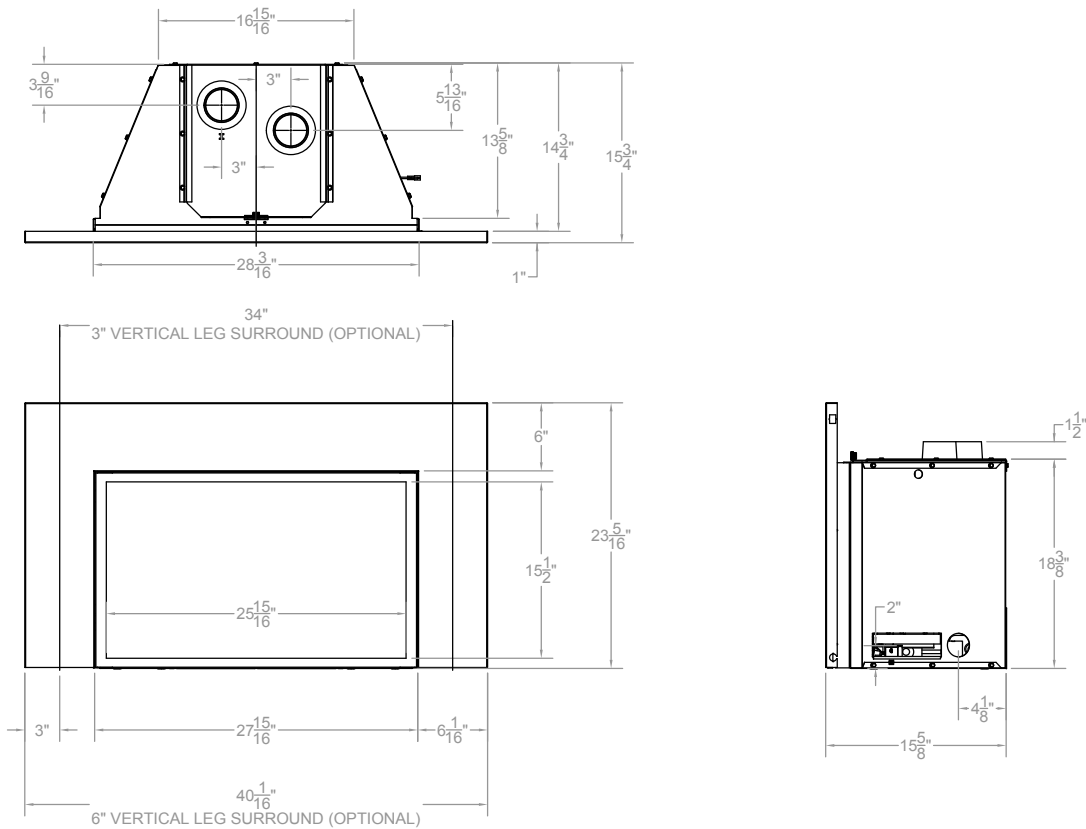
TECHNICAL INFORMATION

- Maximum heat output:
19,500 BTU (LP) 20,500 BTU (Nat)
- Efficiency Rating:
 - 71.05% A. F. U. E.
 - 70.10% P4
- Weight: 89 lbs.
- Type of Gas: LP or Natural
- Venting: 3-inch Flex
- Ignition Systems: Intermittent Pilot or Millivolt

FIELD INSTALLED ACCESSORIES

- Decorative Fronts:
Horizon (Matte Black),
Lancaster (Bronze, Matte Black)
- Decorative Door (non-operable):
Transon (Matte Black)
- Decorative Surround: Bronze, Matte Black,
3-Sided Custom, 4-Sided Custom
- Liners:
 - Black Porcelain
 - Herringbone Brick
 - Traditional Brick
 - Washed Brick

DVC20IN



Innsbrook 26IN Direct-Vent Insert DVC26IN



INCLUDES

- Barrier Screen
- Blower

REQUIRES

- Surround

ACTUAL DIMENSIONS

43" W x 26 1/4" H x 17 5/8" D

GLASS VIEWING AREA

28 1/4 x 14 1/8

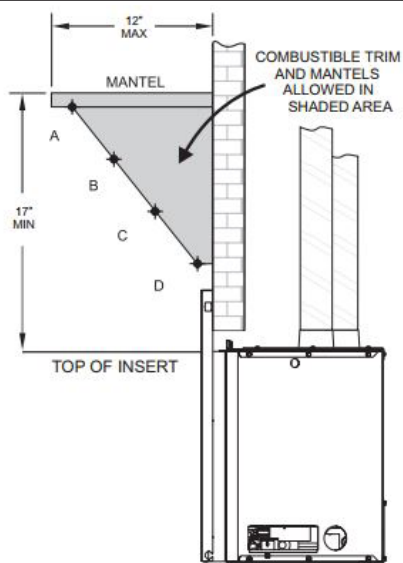
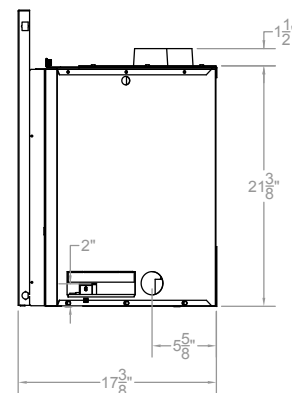
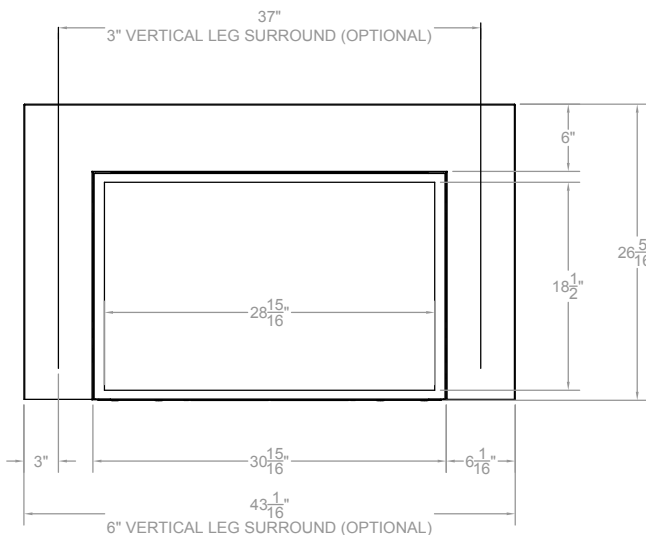
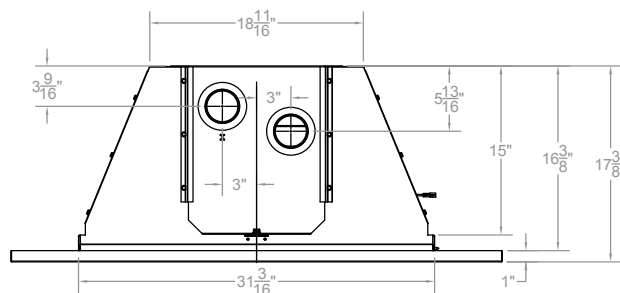
TECHNICAL INFORMATION

- Maximum heat output: 26,000 BTU (LP, Nat)
- Efficiency Rating:
 - 73.37% A. F. U. E.
 - 70.90% P4
- Weight: 109 lbs.
- Type of Gas: LP or Natural
- Venting: 3-inch Flex
- Ignition Systems: Intermittent Pilot or Millivolt

FIELD INSTALLED ACCESSORIES

- Decorative Fronts:
 - Horizon (Matte Black),
 - Lancaster (Bronze, Matte Black)
- Decorative Door (non-operable):
 - Transon (Matte Black)
- Decorative Surround:
 - Bronze, Matte Black,
 - 3-Sided Custom, 4-Sided Custom
- Liners:
 - Black Porcelain
 - Herringbone Brick
 - Traditional Brick
 - Washed Brick

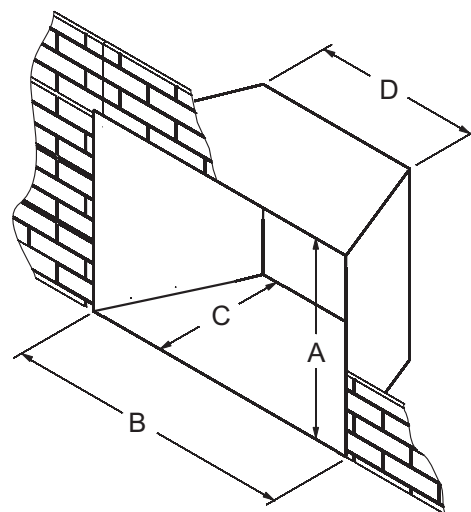
DVC26IN



Index Letter	Mantel Depth From Fireplace Face	Distance From Top of Insert
Dimensions in Inches		
A	9-1/4	16
B	7-1/4	13
C	4-1/2	12
D	1-3/4	8

Minimum Fireplace Opening Dimensions (in inches)

Height (A)	21 1/2
Front Width (B)	31 1/4
Depth (C) with 1-inch deep surround	16 5/8
Rear Width (D)	19



Empire is committed to continuous product improvement; specifications are subject to change without notice. Dimensions in this brochure are approximate; read and follow the framing dimensions in the owners manual supplied with your Empire product. Flame size, shape, and color will vary from photos. Our mantels feature natural veneers and hand-rubbed finishes – wood grain and color will vary. Adjust light levels and use "natural light" incandescent bulbs to enhance the dramatic look for your wooden mantel.

Member of the following industry associations:



This appliance is design-certified to the ANSI standard by:



SINCE 1932

Empire Comfort Systems Inc.
918 Freeburg Ave.
Belleville, IL 62220-2623
info@empirecomfort.com
01/18

The Empire Comfort Systems and White Mountain Hearth names and logos are registered U.S. trademarks.

Innsbrook 28IN Direct-Vent Insert DVC28IN



INCLUDES

- Barrier Screen
- Blower

REQUIRES

- Surround

ACTUAL DIMENSIONS

46" W x 28 1/4" H x 17 5/8" D

GLASS VIEWING AREA

31 1/4 x 16 1/8

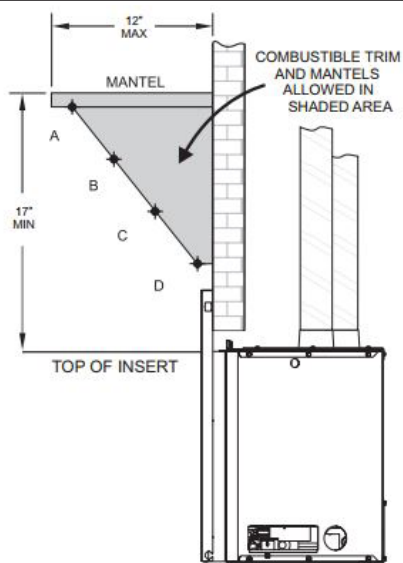
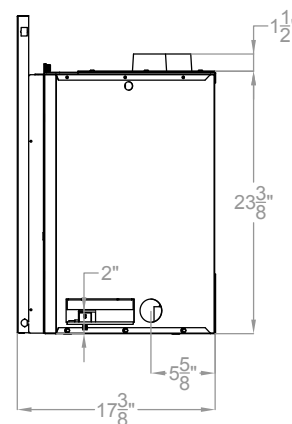
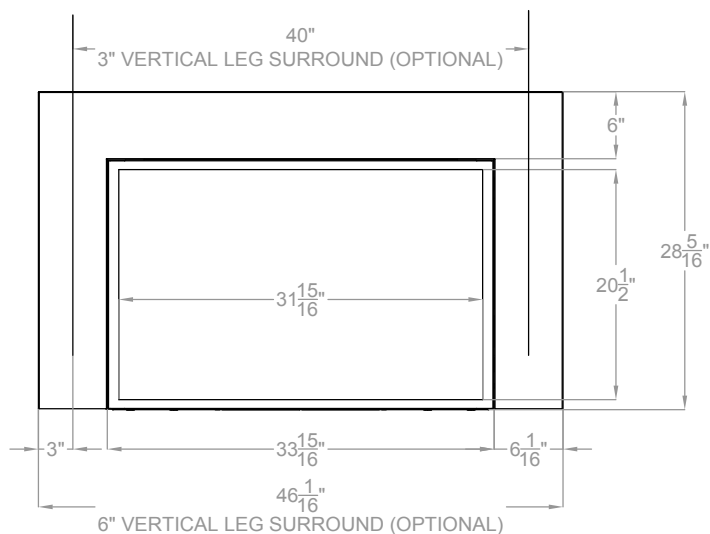
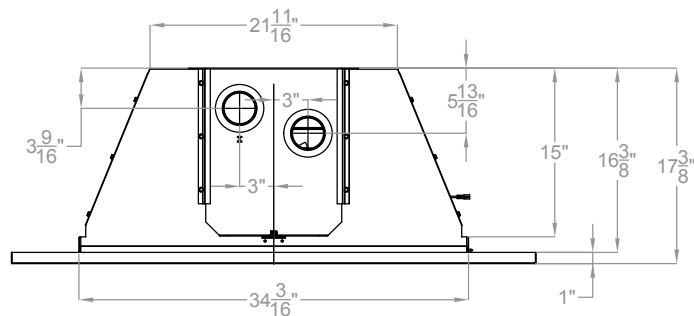
TECHNICAL INFORMATION

- Maximum heat output:
27,500 BTU (LP) 28,500 BTU (Nat)
- Efficiency Rating:
 - 74.76% A. F. U. E.
 - 73.40% P4
- Weight: 119 lbs.
- Type of Gas: LP or Natural
- Venting: 3-inch Flex
- Ignition Systems: Intermittent Pilot or Millivolt

FIELD INSTALLED ACCESSORIES

- Decorative Fronts:
Horizon (Matte Black),
Lancaster (Bronze, Matte Black)
- Decorative Door (non-operable):
Transon (Matte Black)
- Decorative Surround:
Bronze, Matte Black,
3-Sided Custom, 4-Sided Custom
- Liners:
 - Black Porcelain
 - Herringbone Brick
 - Traditional Brick
 - Washed Brick

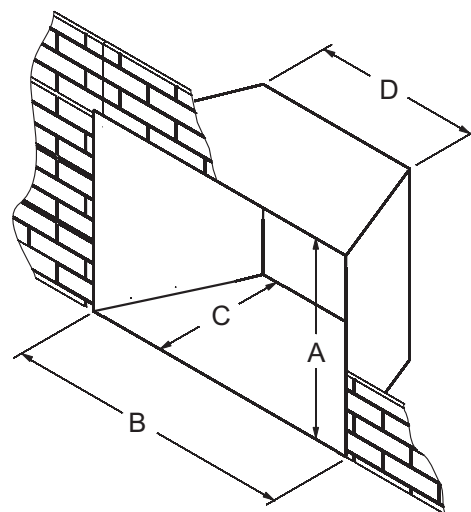
DVC28IN



Index Letter	Mantel Depth From Fireplace Face	Distance From Top of Insert
Dimensions in Inches		
A	9-1/4	16
B	7-1/4	13
C	4-1/2	12
D	1-3/4	8

Minimum Fireplace Opening Dimensions (in inches)

Height (A)	23 1/2
Front Width (B)	34 1/4
Depth (C) with 1-inch deep surround	16 5/8
Rear Width (D)	22



Empire is committed to continuous product improvement; specifications are subject to change without notice. Dimensions in this brochure are approximate; read and follow the framing dimensions in the owners manual supplied with your Empire product. Flame size, shape, and color will vary from photos. Our mantels feature natural veneers and hand-rubbed finishes – wood grain and color will vary. Adjust light levels and use "natural light" incandescent bulbs to enhance the dramatic look for your wooden mantel.

Member of the following industry associations:



This appliance is design-certified to the ANSI standard by:



SINCE 1932

Empire Comfort Systems Inc.
918 Freeburg Ave.
Belleville, IL 62220-2623
info@empirecomfort.com
01/18

The Empire Comfort Systems and White Mountain Hearth names and logos are registered U.S. trademarks.